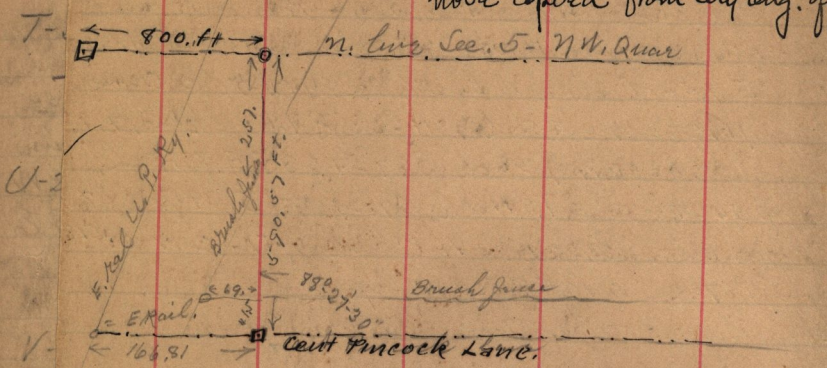


note copied from City Eng. of



X ✓ C. Admison to - Maul & others
 Pt N.W. 1/4 Sec 16 T-6. N.R., 1-W,
 Proj 6.12 ch E. of S.W. cor N.S. 39 ch E. 386
 S & W. to bog. land for decd

Y ✓ C. Admison to John F. Pomeroy
 Proj. on S. line 1/4 91.03 ft S 89° 26' - 30" E.
 from S. corner N 6° 30' E 116.4 ft
 S 89° 17' E 295.44 ft along S. line 4th St
 S 53° 30' W 114.4 ft to S. line ad 1/4 Sec
 N 89° 26' - 30" W 312.6 ft to bog